



**WTC MACHINERY** Engineered to perform. Built to last.

WTC Machinery is a global leader in designing and building machinery and tooling for heavy equipment repair facilities.

## FP100 Portable Pin Press

### Overview

WTC Machinery's FP100 – 100 Ton Portable Pin Press is designed to make field operations easier and safer. This pin press has a light, user-friendly system and is ideally suited to service excavator and bulldozers up to a Caterpillar D9, Komatsu PC600 or D155. It also has the capability to service other makes of excavator and bulldozer or any type of machinery using track style chains like trencher chains or apron feeders. Featuring an open c-frame design and a full range of tooling, the FP100 press can service track style chains with pin diameters ranging from .76" (19,3mm) up to 2.56" (65,1mm).



FP100E

The FP100 press is available without a hydraulic pump, or we provide several durable pumps to match shop or a service truck power. For safety during use, we also offer an optional pressure gauge, lifting sling (engineered specifically for use with this press) and a safety blanket (to protect from possible flying debris).

To protect your investment and keep everything together in one convenient spot WTC offers a custom storage/travel box for safe and secure storage and transportation of your FP100 press, pump and tooling.



FP100-LS3  
Lifting Sling  
with FP100



FP100-LSB Shipping/Travel Box

**SECTION 2 – FP100 Field Press Specifications**

**DIMENSIONS**

**Weight** (less Hydraulic Power Supply) 510 lbs (232 kg)  
**Width** ..... 10 inches (0,25 m)                      **Height** ..... 18 inches (0,48 m)  
**Length**..... Back Position - 59 inches (1,50 m)              Front Position - 51 inches (1,29 m)

**ENVIRONMENTAL**

Operating Temperature Range - -40 to 100 °F (-40 to 38 °C) (See page 5 for hydraulic oil recommendations)  
 Storage Conditions - 0 to 150 °F (-18 to 65 °C) Non-condensing Moisture

**PRESSING CAPACITY**

100 Short Tons (90,9 tonnes)

**HYDRAULIC CYLINDER STROKE**

Stroke – 16 inches (405 mm)                      Bore – 5 inches (127 mm)

**THROAT DIMENSIONS**

Width – 16 inches (405 mm)                      Depth – 4 inches (101 mm)

**TRACK MODELS**

Caterpillar D9 & Below, Komatsu PC600, D155 & Below, & All Comparable Tracks

**HYDRAULIC POWER SUPPLIES**

Maximum Pressure (all units)..... 10,000 p.s.i.                      (690 bar)

	Compressed Air	115V 60 Hz Electric	220V 50 Hz Electric*	Hand Pump
FP100 Model	FP100A	FP100E	FP100-220-CE	FP100H
Reservoir Capacity	2 gal (7,6 l)	2 gal (11,4 l)	2 gal (7,6 l)	1.8 gal (6,8 l)
Flow @ 150 psi (10,3 bar)	400 in <sup>3</sup> /min (6,5 lpm)	550 in <sup>3</sup> /min (9,0 lpm)	290 in <sup>3</sup> /min (4,8 lpm)	137 in <sup>3</sup> /min (2,2 lpm)**
Flow @ 10000 psi (690 bar)	60 in <sup>3</sup> /min (1,0 lpm)	39 in <sup>3</sup> /min (0,6 lpm)	16 in <sup>3</sup> /min (0,26 lpm)	5 in <sup>3</sup> /min (0,08 lpm)**
Power	4 Hp (3,0 kW)	1-1/2 Hp (1,1 kW)	1/2 Hp (0,4 kW)	-
Power Supply	62 SCFM @ 100 psi 1,8 m <sup>3</sup> /min @ 6,9 bar	10 A @ 115 V 60Hz	5 A @ 220 V 50 Hz	-
Width	12.8" (0,33 m)	11.4" (0,29 m)	11.5" (0,29 m)	30.98" (0,79 m)
Length	16.5" (0,42 m)	17.0" (0,43 m)	9.6" (0,24 m)	12.2" (0,31 m)
Height	12.3" (0,31 m)	18.5" (0,47 m)	18.5" (0,47 m)	11.73" (0,3 m)
Dry Weight	45 lb (14 kg)	94 lb (43 kg)	53 lb (21 kg)	60 lb (27 kg)

\* - Also available: 5.0 Amps, 220V 60Hz, 1 Phase (FP100-220)  
 5.0 Amps, 220V 50Hz, 1 Phase Non-CE Mark (FP100-220-50)  
 \*\* - Flow based on 20 strokes per minute

**NOTE - Electric Pump Models require 4200W minimum Customer Power.**  
 When using Electric Pump models with extension cords, always use cords with #12 AWG (4,0 mm<sup>2</sup>) or heavier wires, no longer than 50 feet (15 meters.)



**WTC MACHINERY** Engineered to perform. Built to last.

WTC Machinery is a global leader in designing and building machinery and tooling for heavy equipment repair facilities.

## FP150 Portable Pin Press

### Overview

WTC Machinery's mid-range FP150 Portable Pin Press, with a pressing force up to 150 tons, is a workhorse able to handle those tougher jobs. This pin press features a C-Frame design making it easier to service larger construction or mining equipment and is ideally suited to service excavators and bulldozers up to a Caterpillar D10, Komatsu PC800, and D275. With the full range of tooling, the FP150 pin press can service track style chains with pin diameters ranging from .87" (22,0mm) up to 2.75" (69,8mm).



The FP150 press is available without a hydraulic pump, or we provide several durable pumps to match shop or a service truck power. For safety during use, we also offer an optional pressure gauge, lifting sling (engineered specifically for use with this press) and a safety blanket (to protect from possible flying debris).

Due to the sheer size of this press a box is not an option. To protect your investment and keep everything together in one convenient spot WTC offers a custom travel skid for safe and secure storage and transportation of your FP150 press, pump and tooling.



FP150 on Travel Skid



FP150 on  
FP100-LS





**WTC MACHINERY** Engineered to perform. Built to last.

WTC Machinery is a global leader in designing and building machinery and tooling for heavy equipment repair facilities.

## FP250 Portable Pin Press

### Overview

WTC Machinery's FP250 pin press has a similar design as our FP100 press, however, much larger with 250 tons of force to press the largest of dozer, excavator and feeder chain. This is an option designed specifically for situations where the MPP150 or MPP250 tie rod design will not work or for those operators who like the c-frame design. Using the same tooling as the MPP250 it is capable of service the same Caterpillar D11, Komatsu D475 tracks or pin diameters ranging from .87" (22,0mm) up to 3.55" (89,9mm).



The FP250 press is available without a hydraulic pump, or we provide several durable pumps to match shop or a service truck power. For safety during use, we also offer an optional pressure gauge, lifting sling (engineered specifically for use with this press) and a safety blanket (to protect from possible flying debris).

Due to the sheer size of this press a box is not an option. To protect your investment and keep everything together in one convenient spot WTC offers a custom travel skid for safe and secure storage and transportation of your FP250 press, pump and tooling.



FP250 on Travel Skid



FP250 vs FP100





**WTC MACHINERY** Engineered to perform. Built to last.

WTC Machinery is a global leader in designing and building machinery and tooling for heavy equipment repair facilities.

## MPP150 Portable Pin Press

### Overview

WTC Machinery's mid-range MPP150 Portable Pin Press, with a pressing force up to 150 tons is a workhorse able to handle those tougher jobs. This pin press features a tie rod design making it easier to service larger construction or mining equipment and is ideally suited to service excavators and bulldozers up to a Caterpillar D10, Komatsu PC800, and D275. With the full range of tooling, the MPP150 pin press can service track style chains with pin diameters ranging from .87" (22,0mm) up to 2.75" (69,8mm).



MPP150

The MPP150 press is available without a hydraulic pump, or we provide several durable pumps to match shop or a service truck power. For safety during use, we also offer an optional pressure gauge, lifting sling (engineered specifically for use with this press) and a safety blanket (to protect from possible flying debris).

To protect your investment and keep everything together in one convenient spot WTC offers either a custom storage/travel box or a travel skid with optional cover for safe and secure storage and transportation of your MPP150 press, pump and tooling.



Travel Box  
MPP150-SB



Travel Skid  
MPP150-TS



## SECTION 2 – MPP150 Portable Pin Press Specifications

### DIMENSIONS

**Weight** (less Hydraulic Power Supply) 800 lbs (364 kg)      **Length** .....64 inches (1,63 m)  
**Width** ..... 12 inches (0,30 m)      **Height** ..... 18 inches (0,46 m)

### ENVIRONMENTAL

Operating Temperature Range - -40 to 100 °F (-40 to 38 °C) (See page 5 for hydraulic oil recommendations)  
 Storage Conditions - 0 to 150 °F (-18 to 65 °C) Non-condensing Moisture

### PRESSING CAPACITY

150 Short Tons (136 tonnes)

### HYDRAULIC CYLINDER STROKE

Stroke – 16 inches (406 mm)      Bore – 6.12 inches (155 mm)

### THROAT DIMENSIONS

Width – 27 inches (686 mm)      Depth – 10 inches (254 mm)

### TRACK MODELS

Caterpillar D10 & Smaller, Komatsu D275, PC800 & Smaller, & All Comparable Models

### HYDRAULIC POWER SUPPLIES

Maximum Pressure (all units)..... 10,000 p.s.i.      (690 bar)

	Hand Power	Compressed Air	115V 60 Hz Electric	220V 50 Hz Electric*
MPP150 Model	MPP150-H	MPP150-A	MPP150-E	MPP150-220CE
Reservoir Capacity	1.8 gal (6,8 l)	5 gal (18,9 l)	5 gal (18,9 l)	5 gal (18,9 l)
Flow @ 150 psi (10,3 bar)	137 in <sup>3</sup> /min (2,2 lpm)**	500 in <sup>3</sup> /min (8,2 lpm)	310 in <sup>3</sup> /min (5,1 lpm)	700 in <sup>3</sup> /min (11,5 lpm)
Flow @ 10000 psi (690 bar)	5 in <sup>3</sup> /min (0,08 lpm)**	100 in <sup>3</sup> /min (1,6 lpm)	37 in <sup>3</sup> /min (0,6 lpm)	60 in <sup>3</sup> /min (1,0 lpm)
Power	-	4 Hp (3,0 kW)	1-1/2 Hp (1,1 kW)	1-3/4 Hp (1,3 kW)
Power Supply	-	62 SCFM @ 100 psi 1,8 m <sup>3</sup> /min @ 6,9 bar	10 A @ 115 V 60Hz	11 A @ 220 V 50 Hz
Width	25.0" (635 mm)	11.7" (0,30 m)	11.7" (0,30 m)	19.7" (0,50 m)
Length	11.2" (284 mm)	25.8" (0,66 m)	25.8" (0,66 m)	24.0" (0,61 m)
Height	14.1" (358 mm)	12.6" (0,32 m)	18.3" (0,47 m)	18.3" (0,47 m)
Dry Weight	71 lb (32 kg)	44 lb (20 kg)	108 lb (49 kg)	109 lb (50 kg)

\* - Also available: 5.0 Amps, 220V 60Hz, 1 Phase (MPP150-220DOM)  
 5.0 Amps, 220V 50Hz, 1 Phase Non-CE Mark (MPP150-220-50)

\*\* - Flow based on 20 strokes per minute

**SPECIFICATIONS SUBJECT TO CHANGE WITHOUT NOTICE**



**WTC MACHINERY** Engineered to perform. Built to last.

WTC Machinery is a global leader in designing and building machinery and tooling for heavy equipment repair facilities.

## MPP250 Portable Pin Press

### Overview

WTC Machinery's MPP250 Portable Pin Press is the big brother to the FP100 and MPP150 presses. As with the MPP150, the MPP250 pin press also features a tie rod design and is suited to service excavators and bulldozers up to a Caterpillar D11, Komatsu 475 or comparable large machinery. With the full range of tooling, the MPP150 pin press can service track style chains with pin diameters ranging from .87" (22,0mm) up to 3.55" (89,9mm).



The MPP250 press is available without a hydraulic pump, or we provide several durable pumps to match shop or a service truck power. For safety during use, we also offer an optional pressure gauge, lifting sling (engineered specifically for use with this press) and a safety blanket (to protect from possible flying debris).

Due to the sheer size of this press a box is not an option. To protect your investment and keep everything together in one convenient spot WTC offers a custom travel skid with optional cover for safe and secure storage and transportation of your MPP250 press, pump and tooling.



MPP250 on Travel Skid  
MPP250-TS



## SECTION 2 – MPP250 Portable Pin Press Specifications

### DIMENSIONS

**Weight** (less Hydraulic Power Supply) 1250 lbs (568 kg)      **Length** .....80 inches (2,03 m)  
**Width** ..... 19 inches (0,48 m)      **Height** ..... 27 inches (0,69 m)

### ENVIRONMENTAL

Operating Temperature Range: -40 to 100 °F (-40 to 38 °C) (See page 6 for hydraulic oil recommendations)

Storage Conditions: 0 to 150 °F (-18 to 65 °C) Non-condensing Moisture

### PRESSING CAPACITY

250 Short Tons (277 tonnes)

### HYDRAULIC CYLINDER STROKE

Stroke – 18 inches (457 mm)      Bore – 8 inches (203 mm)

### THROAT DIMENSIONS

Width – 42 inches (1066 mm)      Depth – 15 inches (381 mm)

### TRACK MODELS

Up to Caterpillar D11, Komatsu D475, and comparable Bulldozer and Excavator Tracks

### HYDRAULIC POWER SUPPLIES

Maximum Pressure (all units)..... 10,000 p.s.i.      (690 bar)

	Compressed Air	115V 60 Hz Electric	220V 50 Hz Electric*
MPP250 Model	MPP250-A	MPP250-E	MPP250-220-CE
Reservoir Capacity	5 gal (18,9 l)	5 gal (18,9 l)	5 gal (18,9 l)
Flow @ 150 psi (10,3 bar)	500 in <sup>3</sup> /min (8,2 lpm)	310 in <sup>3</sup> /min (5,1 lpm)	700 in <sup>3</sup> /min (11,5 lpm)
Flow @ 10000 psi (690 bar)	100 in <sup>3</sup> /min (1,6 lpm)	37 in <sup>3</sup> /min (0,6 lpm)	60 in <sup>3</sup> /min (1,0 lpm)
Power	4 Hp (3,0 kW)	1-1/2 Hp (1,1 kW)	1-3/4 Hp (1,3 kW)
Power Supply	62 SCFM @ 100 psi 1,8 m <sup>3</sup> /min @ 6,9 bar	10 A @ 115 V 60Hz	11 A @ 220 V 50 Hz
Width	11.7" (0,30 m)	11.7" (0,30 m)	19.7" (0,50 m)
Length	25.8" (0,66 m)	25.8" (0,66 m)	24.0" (0,61 m)
Height	12.6" (0,32 m)	18.3" (0,47 m)	18.3" (0,47 m)
Dry Weight	44 lb (20 kg)	108 lb (49 kg)	109 lb (50 kg)

\* - Also available: 5.0 Amps, 220V 60Hz, 1 Phase (MPP250-220DOM)  
5.0 Amps, 220V 50Hz, 1 Phase Non-CE Mark (MPP250-220)

\*\* - Flow based on 20 strokes per minute

**SPECIFICATIONS SUBJECT TO CHANGE WITHOUT NOTICE**



**WTC MACHINERY** Engineered to perform. Built to last.

WTC Machinery is a global leader in designing and building machinery and tooling for heavy equipment repair facilities.

## HFPP - Hands Free Pin Pusher

### Overview

For years now mechanics have been removing track chain assembly master pins using a sledgehammer and punch, those days are over. When the cost of a fully hydraulic Master Pin Presses is hard to justify, the Hands Free Pin Pusher is the answer. One mechanic can safely do the job without having to hold the sledge hammer in one hand and the punch in the other. This eliminates the many safety hazards by keeping your mechanics from being struck by the sledgehammer when holding the pin punch.

If you have a few pieces of machines with smaller pins, or are just getting started in the undercarriage business, this may be just the tool you need. Like the powered portable presses, the HFPP gives you the ability to remove on smaller excavator tracks and is designed with the Heavy Equipment Field Mechanics in mind.

This device is very easy to use and can be set up in under a minute saving you both time and money when removing master pins. Using the included clamp, the HFPP is attached to the track pad that is aligned with your master pin. This allows the user to swing the sledgehammer fully with confidence and safety.



HFPP consists of:

Hands free punch for pin diameters 1.4 (36mm)" and larger

Medium Tool Holder for pins 1.1 (28mm)"to 1.4 (36mm)"

Small Tool holder for pins 0.7 (18mm)"to 1.1 (28mm)"

Heavy U-Clamp





**WTC MACHINERY** Engineered to perform. Built to last.

WTC Machinery is a global leader in designing and building machinery and tooling for heavy equipment repair facilities.

## 200T Track Press

### Overview

With 200 tons of pressing force on each of its two rams, the 200T works tracks up to and beyond 9½" (240 mm) Pitch. The 200T Track Press comes standard with 30 feet (9,14 meter) of conveyor with longer lengths available. Add on WTC Machinery's Pad Lifter and a Track Wrench for a complete track service system.

Features in the 200T Track Press include a Guard door to protect the operator and a hydraulic powered high-mount winch giving them a clear view of the cable and track. The high ram speed shortens rebuilding times while the index table effortlessly moves the track in and out of the work area

The 200T track press accepts WTC Machinery 91-Series, 93-Series and C-Style tooling. With tool mounts that precisely adjust in all directions and with the optional jaw adapters all existing tooling used on Wolf, Trackmaster, Centurion or Mattson track presses can also be used.

Including the optional Pad Lifter eliminates the need to remove the shoes during pin and bushing turns while the optional wireless remote control for the winch and pad lifter allows the operator the freedom to move around the press and conveyor for easy inspection while still performing various operations.



### Specifications:

#### Main Rams (x 2)

Pressing Force:	200/182 Tons	
Travel:	7-7/8" (200 mm)	
Diameter:	Ram 7.5" (190 mm) Piston 8" (203 mm)	
Ram Speed:	50 Cycle	60 Cycle
Approach:	63 IPM (1,60 m/min)	76 IPM (1,9 m/min)
Pressing:	17 IPM (0,4 m/min)	21 IPM (0,5 m/min)
Return:	145 IPM (3,7 m/min)	171 IPM (4,3 m/min)

#### Electrical

Main Motor:	20 Hp (14.9 kW)
Standard Voltages:	Three Phase
	208V / 60 Hz
	220V / 50 Hz
	230V / 60 Hz
	380V / 50 Hz
	440V / 50 Hz
	460V / 60 Hz

**Winch** 9,000 lbs (4090 kg) Capacity

**200T-000 Track Press Specifications**

**DIMENSIONS**

Weight ... 8400 lbs (3820 kg)	Width (Depth) (without conveyors)..... 117 inches (3,0 m)
Length .... 101 inches (2,6 m)	Height ..... 66 inches (1,7 m)
Operating Temperature Range ..... 50° to 100° F (10° to 37° C)	

**RAMS**

Capacity ... 200 tons (182 t), each ram	<b>Speeds -</b>	
Travel ..... 7-7/8 inches (200 mm)	50 Cycle	60 Cycle
Ram Diameter: 7.5 inches (190 mm)	Approach 63 IPM (1,6 m/min)	76 IPM (1,9 m/min)
Piston Diameter: 8 inches (203 mm)	Pressing 17 IPM (0,4 m/min)	21 IPM (0,5 m/min)
	Return 145 IPM (3,7 m/min)	171 IPM (4,3 m/min)

**HYDRAULIC PUMP UNIT**

**Pumps -**

High Pressure Pump 4.76 gpm (18,0 lpm)  
7960 psi (545 atm.) max.  
Low Pressure Pump 12.00 gpm (45.5 lpm)  
2000 psi (136 atm.) max.

**Reservoir -**

Total - 50 US gallons (190 l)  
Usable - 35 US gallons (132 l)

**Oil Type -**

ISO 32, SUS 50 to 300 over 70° to 180° F range. Pressure rating to 8,000 p.s.i.  
Anti-wear additives suited to hydraulic pumps.

**Electric Motor -**

20 Hp (14.9 kW) 3 Phase electric.

Standard Voltages:

<u>50 Hz (1500 rpm)</u>	<u>60 Hz (1800 rpm)</u>
440V/29A,	460V/27A
380V/30A	230V/54A
220V/56A	208V/60A

Other voltages available

**POWER WINCH**

Hydraulically operated power winch with 9,000 pound (4090 kg) pulling capacity.

**INDEX TABLE**

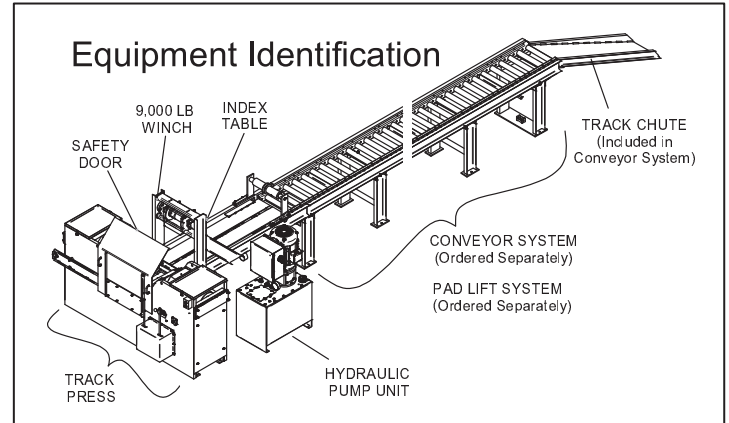
Hydraulically operated Index Table moves track in and out of work area.

- 200C-000 version - Continuous Chain Index Table
- 200-000 version – Stroking Cylinder Index Table

**CONVEYOR SYSTEM**

**Medium Duty Conveyor System** – (sold separately) 30-foot (9,1 m), 40-foot (12,2 m) or 50-foot (15,2 m)  
Conveyor Systems support the track chain for pad shoe work and easy movement by the Index Table.

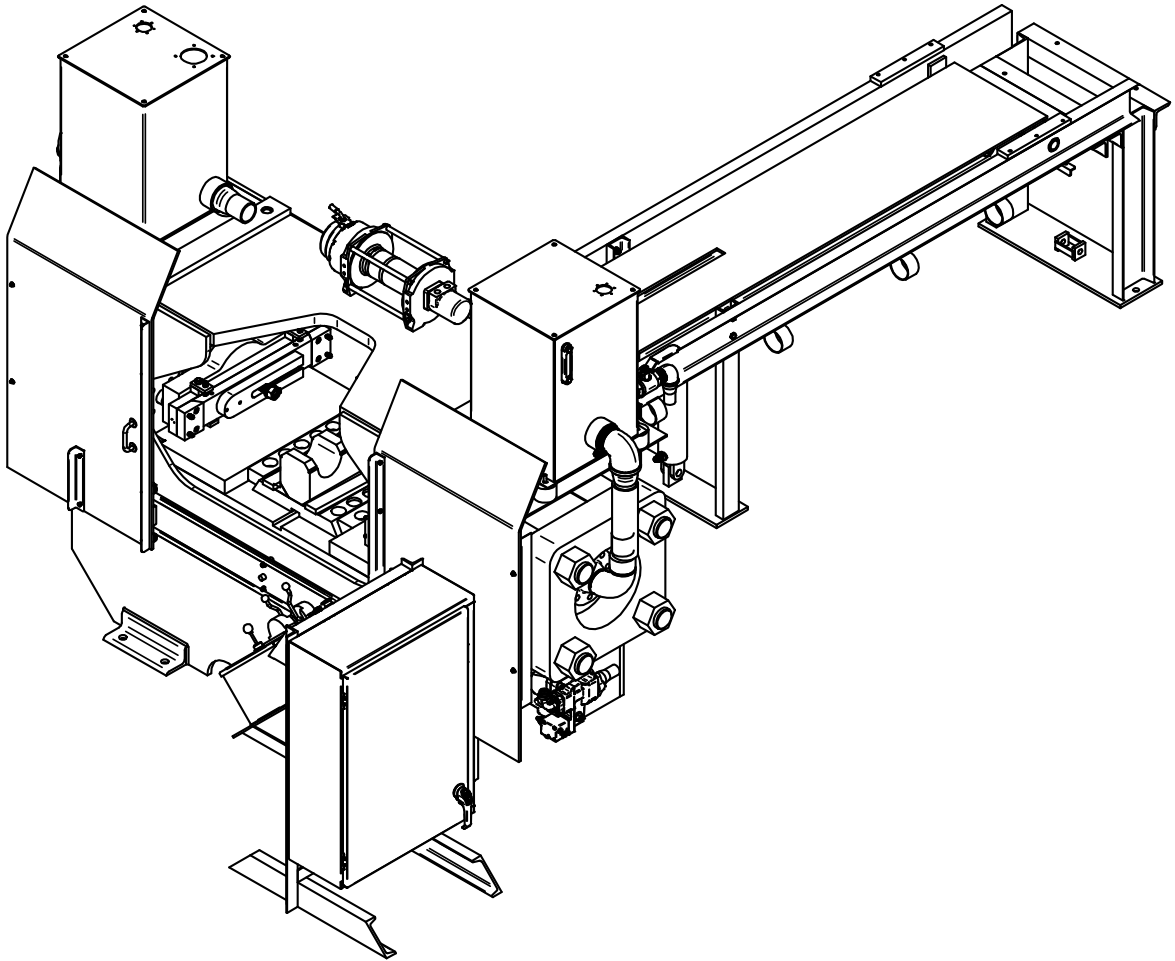
**Optional Pad Lifting Devices** - Available in 30-foot (9,1 m) (**D1429-030-DA**), 40-foot (12,2 m) (**D1429-040-DA**) or 50-foot (15,2 m) (**D1429-050-DA**) lengths, the optional pad lift system hydraulically raises and lowers pad shoes from the track chain, reducing disassembly and assembly labor.



**SPECIFICATIONS SUBJECT TO CHANGE WITHOUT NOTICE**

# WTC 400T

## 400 Ton Track Press



Machinery, LLC

W1222 Linden Road

Ixonia, Wisconsin 53036 USA

Phone: 800.248.8405 or 262.567.3993

Fax: 262.567.4307

[www.wtcmachinery.com](http://www.wtcmachinery.com)

**WTC 400T Track Press Specifications**

**COMPONENT DIMENSIONS**

Component	Weight	Width	Height	Length
Track Press, Index Table, Console and Hydraulics (Dry)	11485 lbs (5210 kg)	109 in (2,8 m)	82 in (2,1 m)	161 in (4 m)

Operating Temperature Range ..... 50° to 100° F (10° to 37° C)

**RAMS**

Capacity: 400 tons (400 t), each ram	<u>Ram Speeds - 50 Cycle/60 Cycle</u>
Travel: 8 inches (203.2 mm)	Approach: 131 IPM (3,3 m/min)
Ram Diameter: 12.0 inches (305 mm)	Pressing: 12 IPM (0,3 m/min)
Piston Diameter: 14 inches (356 mm)	Return: 235 IPM (6 m/min)

**SADDLES AND CONTACT TOOLING**

The WTC400T Track Press accepts most current models of track saddles and contact tooling.

Please consult the "C"-Style, 91-Series and 93-Series Tool Catalogs

Contact WTC Machinery for details on part numbers and proper use and application of tooling.

**HYDRAULIC PUMP UNIT**

**Pump -**

Pump 8 gpm (30.4 IPM)  
5200 psi (359 bar) max.

**Electric Motors -**

25 Hp (18,65 kW)  
3 Phase electric

**Standard Voltages:**

<u>50 Hz (1500 rpm)</u>	<u>60 Hz (1800 rpm)</u>
415V/30A,	460V/30A
380V/27A	230V/60A
220V/60A	208V/66A

**Reservoir -**

Total - 40 US gallons (151 l)

Other voltages available

**OPTIONAL WINCH**

Hydraulically powered winch loads the track chain onto the Conveyor System, with a 12,000 pound (5450 kg) pulling capacity.

**INDEXER**

Hydraulically operated Indexer moves track in and out of work area.

**OPTIONAL CONVEYOR SYSTEM AND OPTIONAL PAD LIFT SYSTEM**

**Conveyor System (C1091-050-MD)** - Holds 50 feet (15,2m) of track chain on roller conveyor sections.

**Optional Pad Lifting Device (400-008-050)** - Matched to the 50 foot (15,2 m) Conveyor System  
Lifts and holds track pads off of the track chain, to reduce handling and labor time.

***SPECIFICATIONS SUBJECT TO CHANGE WITHOUT NOTICE***



**WTC MACHINERY** Engineered to perform. Built to last.

WTC Machinery is a global leader in designing and building machinery and tooling for heavy equipment repair facilities.

## WTC-305 Track Press

### Overview

With 307 tons (280M) of pressing force and standard track clamp, the WTC-305 has the muscle to work practically any track chain safely. The high-force indexer and wireless controlled winch move the biggest chain, and rapid ram movement shortens turn-around time.

The WTC-305 comes with a standard 40 foot (12.2 meter) conveyor for most track chains, while the optional 50 foot (15.2 meter) conveyor supports even the longest chains. Either conveyor system can be equipped with an optional Shoe Lifting Device.

The WTC-305 works with all popular tooling types, including the 91-Series Tooling and C-Style Tooling available from WTC Machinery.



### Features: WTC-305 Track Press

1. Optional Hydraulic Hold Down Clamp securely holds the track chain in position, preventing tool and track damage.
2. Safety Door.
3. Large main cylinders (not shown in picture) use low hydraulic pressure for safe, economical, low-maintenance operation.
4. Jaws are securely held by tapered locks and hold down bolts. Adapters are available for all popular styles of jaws.
5. The WTC-305 accepts all popular models of tooling, with Tool Mounts that precisely adjust in all directions and make tooling changes fast and simple.
6. The Ram Controls feature infinitely-variable speed forward and reverse.

### Specifications:

#### Main Rams

Pressing Force: 305/277M Tons  
 Piston Diameter: 12.5 inches (317 mm)  
 Stroke: 11 inches (279 mm)

Ram Speed:	50 Cycle	60 Cycle
Approach:	140 IPM (3.6 m/min)	140 IPM (3.6 m/min)
Pressing:	18 IPM (0.4 m/min)	21 IPM (0.5 m/min)
Return:	260 IPM (6.6 m/min)	260 IPM (6.6 m/min)

#### Hydraulic System

Fluid Capacity: 100 gallons (378 liters)  
 Pressure at Full Ram Force: 5000 psi (345 bar)  
 Maximum Flow Rate: 74.5 gpm (282 lpm)

#### Electrical

Main Motor: 40 Hp (30.0 kW)  
 Charge Pump: 0.5 Hp (0.43 kW)  
 Standard Voltages: Three Phase  
 208V / 60 Hz 125 A  
 220V / 50 Hz 114 A  
 230V / 60 Hz 110 A  
 380V / 50 Hz 55 A  
 415V / 50 Hz 62 A  
 460V / 60 Hz 55 A

**WTC305 Track Press Specifications**

**COMPONENT DIMENSIONS**

	<b>Weight</b>	<b>Width</b>	<b>Height</b>	<b>Length</b>
<b>Track Press</b>	15200lbs (6900kg)	136 in (3,5m)	74 in (1,9 m)	45 in (1,2 m)
<b>Control Console</b>	850 lbs (386 kg)	39 in (1,0 m)	44 in (1,1 m)	69 in (1.8 m)
<b>Index Table</b>	1800 lbs (820 kg)	28 in (0,7 m)	36 in (0,9 m)	130 in (3,3 m)
<b>Hydraulic Pump Unit (Dry)</b>	2000 lbs (910 kg)	44 in (1,1 m)	40 in (1,1 m)	62 in (1,6 m)
<b>Conveyor System (40 Foot)</b>	4920 lbs (2232 kg)	27 in (0,7 m)	36 in (0,9 m)	550 in (14,0 m)
<b>Optional Pad Lift (40 Foot)</b>	975 lbs (442 kg)	See 40 Foot Conveyor System		

Operating Temperature Range ..... 50° to 100° F (10° to 37° C)

**RAMS**

Capacity ... 305 tons (277 t), each ram	<b>Speeds -</b>
Travel ..... 11 inches (279 mm)	50 Cycle _____ 60 Cycle
Ram Diameter: 8.50 inches (217 mm)	Approach 132 IPM (3,4 m/min) 132 IPM (3,4 m/min)
Piston Diameter: 12.50 inches (317.5 mm)	Return 175 IPM (4,4 m/min) 175 IPM (4,4 m/min)

**SADDLES AND CONTACT TOOLING**

The WTC305 Track Press accepts most current models of track saddles and contact tooling.

Please consult the "C"-Style Tool Catalog, 91-Series and 93-Series Tool Catalogs (available from WTC Machinery) for details on part numbers and proper use of tooling.

**HYDRAULIC PUMP UNIT**

<p><b>Pumps -</b></p> <p>Main Pump 74.5 gpm (282 lpm) 5000 psi (345 bar) max.</p> <p>Charge System Pump 0.5 gpm (2,0 lpm) 300 psi (21 bar) max.</p> <p><b>Reservoir -</b></p> <p>Total - 100 US gallons (380 l) Usable - 80 US gallons (300 l)</p>	<p><b>Electric Motors -</b></p> <p>40 Hp (30,0 kW) and 1/2 Hp (0,43 kW) 3 Phase electric</p> <p><b>Standard Voltages:</b></p> <p>50 Hz (1500 rpm)    60 Hz (1800rpm)</p> <p>415V/62A,                    460V/55A 380V/55A                    230V/110A 220V/114A                    208V/125A</p> <p style="text-align: center;">Other voltages available</p>
--	--

**WINCH**

Hydraulically powered winch loads the track chain onto the Conveyor System, with a 12,000 pound (5450 kg) pulling capacity.

**INDEXER**

Hydraulically operated Indexer moves track in and out of work area.

**CONVEYOR SYSTEM AND OPTIONAL PAD LIFT SYSTEM**

**Conveyor System (C1091-040-DA)** - Holds 40 feet (12,2 m) of track chain on heavy-duty roller conveyor sections – Maximum Chain Weight -16,000 lbs (7270 kg).

**Optional Pad Lifting Device (D1429-040-DA)** - Matched to the 40 foot (12,2 m) Conveyor System Lifts and holds track pads off of the track chain, to reduce handling and labor time.

Pad Lift Capacity -12,000 lbs (5450 kg)

**SPECIFICATIONS SUBJECT TO CHANGE WITHOUT NOTICE**



**WTC MACHINERY** Engineered to perform. Built to last.

WTC Machinery is a global leader in designing and building machinery and tooling for heavy equipment repair facilities.

## WTC-385 Track Press

### Boost productivity with the industry's fastest cycle times.

The WTC-385 Track Press has the high force and rock-solid components needed to work the largest bulldozer and excavator tracks day after day. It can produce the fastest cycle times in the industry, thanks to high flow technology that comes standard on every unit.

#### ***New Joystick Controllers***

The ram force and speed of the WTC-385 are infinitely variable in forward and reverse. This makes the system highly efficient, since the pump only operates in full output mode when necessary, reducing energy usage and heat build-up. The ram is operated with a pair of joysticks, a new feature that provides more control and accuracy than standard manual valves.

The WTC-385 includes a wireless remote control that gives the operator the freedom to move around the unit and inspect it while various operations are being performed. For instance, the operator can walk along the chain as it's being loaded, or can visually confirm that the pads are lifting properly.

#### ***High-Mount Winch***

The narrow frame and spacious working area of the WTC-385 help reduce operator fatigue, putting heavy track parts within easy reach. It includes an indexing table and a 50-foot (15.2 meter) conveyor system to support and position the heaviest track chain. It also includes a high-force, high-mount winch that gives the operator a good view of the cable while extending or retracting it.

A hydraulic hold-down clamp keeps the track chain in position, prolonging tool life and minimizing track damage. Tapered locks and hold-down bolts secure the jaws. Jaw adapters are available. An optional shoe lifting system eliminates the time and effort of handling track shoes.



#### ***Smart Safety Features***

A door-mounted safety switch limits the system's pressing capabilities to reduce the possibility of injury. The new control console design uses low pressure, which protects the operator from possible leaks or breaks, and the large main cylinders also use low pressure for safe, economical, low-maintenance operation.

The WTC-385 accepts all popular models of tooling, including the 91-Series tooling and C-Style tooling available from WTC Machinery. It features tool mounts that precisely adjust in all directions, making tooling changes fast and simple, and adjustable bronze ways maintain tooling alignment under maximum working loads.



**WTC MACHINERY** Engineered to perform. Built to last.

WTC Machinery is a global leader in designing and building machinery and tooling for heavy equipment repair facilities.

## WTC-385 Track Press

### Specifications:

#### Main Rams

Pressing Force: 385/350M Tons  
Piston Diameter: 14 inches (356 mm)  
Stroke: 11 inches (279 mm)

<b>Ram Speed:</b>	50 Cycle	60 Cycle
Approach:	188 IPM (4.7 m/min)	188 IPM (4.7 m/min)
Pressing:	18 IPM (0.4 m/min)	21 IPM (0.5 m/min)
Return:	188 IPM (4.7 m/min)	188 IPM (4.7 m/min)

**Winch Force:** 12,000 pound (5450 kg-f)

#### Hydraulic System

Fluid Capacity:	100 gallons (380 liters)
Pressure at Full Ram Force:	5,000 psi (345 bar)
Maximum Flow Rate:	74.5 gpm (282 lpm)

#### Electrical

Main Motor:	40 Hp (30.0 kW)
Charge Pump:	0.5 Hp (0.43 kW)
Standard Voltages:	Three Phase
	208V / 60 Hz 125 A
	220V / 50 Hz 114 A
	230V / 60 Hz 110 A
	380V / 50 Hz 55 A
	415V / 50 Hz 62 A
	460V / 60 Hz 55 A

**WTC385 Track Press Specifications**

**COMPONENT DIMENSIONS**

	<b>Weight</b>	<b>Width</b>	<b>Height</b>	<b>Length</b>
<b>Track Press</b>	14700 lbs (6680 kg)	82 in (2,1 m)	110 in (2,8 m)	45 in (1,2 m)
<b>Control Console</b>	850 lbs (386 kg)	39 in (1,0 m)	44 in (1,1 m)	69 in (1.8 m)
<b>Index Table</b>	1800 lbs (820 kg)	28 in (0,7 m)	36 in (0,9 m)	130 in (3,3 m)
<b>Hydraulic Pump Unit (Dry)</b>	2000 lbs (910 kg)	44 in (1,1 m)	40 in (1,1 m)	62 in (1,6 m)
<b>Conveyor System (50 Foot)</b>	3200 lbs (1450 kg)	27 in (0,7 m)	36 in (0,9 m)	670 in (17,0 m)
<b>Optional Pad Lift (50 Foot)</b>	1800 lbs (820 kg)	See 50 Foot Conveyor System		

Operating Temperature Range ..... 50° to 100° F (10° to 37° C)

**RAMS**

Capacity ... 385 tons (350 t), each ram	<b>Speeds -</b>		
Travel ..... 11 inches (279 mm)	50 Cycle		60 Cycle
Ram Diameter: 10.0 inches (254 mm)	Approach	170 IPM (4,3 m/min)	188 IPM (4,7 m/min)
Piston Diameter: 14 inches (356 mm)	Pressing	18 IPM (0,4 m/min)	21 IPM (0,5 m/min)
	Return	170 IPM (4,3 m/min)	188 IPM (4,7 m/min)

**SADDLES AND CONTACT TOOLING**

The WTC385 Track Press accepts most current models of track saddles and contact tooling.

Please consult the "C"-Style Tool Catalog and the 91-Series Tool Catalog (available from WTC Machinery) for details on part numbers and proper use of tooling.

**HYDRAULIC PUMP UNIT**

<p><b>Pumps -</b></p> <p>Main Pump 74.5 gpm (282 lpm) 5000 psi (345 bar) max.</p> <p>Charge System Pump 0.5 gpm (2,0 lpm) 300 psi (21 bar) max.</p> <p><b>Reservoir -</b></p> <p>Total - 100 US gallons (380 l) Usable - 80 US gallons (300 l)</p>	<p><b>Electric Motors -</b></p> <p>40 Hp (30,0 kW) and 1/2 Hp (0,43 kW) 3 Phase electric</p> <p><b>Standard Voltages:</b></p> <p>50 Hz (1500 rpm)    60 Hz (1800 rpm)</p> <p>415V/62A,                    460V/55A 380V/55A                    230V/110A 220V/114A                    208V/125A</p> <p>Other voltages available</p>
--	---

**WINCH**

Hydraulically powered winch loads the track chain onto the Conveyor System, with a 12,000 pound (5450 kg) pulling capacity.

**INDEXER**

Hydraulically operated Indexer moves track in and out of work area.

**CONVEYOR SYSTEM AND OPTIONAL PAD LIFT SYSTEM**

**Conveyor System (C1091-050)** - Holds 50 feet (15,2 m) of track chain on heavy-duty roller conveyor sections.

**Optional Pad Lifting Device (D1429-050-SF)** - Matched to the 50 foot (15,2 m) Conveyor System Lifts and holds track pads off of the track chain, to reduce handling and labor time.

**SPECIFICATIONS SUBJECT TO CHANGE WITHOUT NOTICE**



**WTC MACHINERY** Engineered to perform. Built to last.

WTC Machinery is a global leader in designing and building machinery and tooling for heavy equipment repair facilities.

## MINI LUBER

### Overview

WTC Machinery's Mini Luber is the portable solution for job-site repair of sealed and lubricated (SALT) crawler track chains. Sturdy construction stands up to field service, the small size makes it easy to fit on a service truck, and its light weight makes it easy to carry to a job anywhere compressed air is available.

Featuring a compact handle, with an easy-to-read test gauge and pushbutton controls for Vacuum Test and Oil Dispense. This lubricator removes old lubricant from pin and bushing sets on SALT crawler chain, tests for seal leakage, and then re-fills the pin and bushing sets with fresh lubricant.



### Specifications:

Air Supply: 70 and 150 PSI  
(4.83 and 10.34 bar)  
Lubricant Capacity: 1 gallons (3.78 liters)  
Dry Weight: 47 lbs (21.32 kg)

**One (1) A2024 Blunt Needle is included with Mini Luber**

**Additional needles sold separately**

A2024	Blunt Needle -normally used for CAT track
A2679	Rounded Tip -small diameter normally used on JD and Komatsu track
A3334	Sharp Tip - normally used on seals that are self-sealing (Sorefa)
A3422	Shaft of needle has two diameters and an open tip



**WTC MACHINERY** Engineered to perform. Built to last.

WTC Machinery is a global leader in designing and building machinery and tooling for heavy equipment repair facilities.

## AUTO LUBER

### Overview

WTC Machinery's Auto Luber tests and lubricates the track pin and bushing joints used on bulldozers, excavators and other crawler equipment.

This lubricator is used with either a 55 gallon or a 15 gallon drum oil reservoir. The reservoir and controls for the Lubricator are mounted on a mobile cart for portability. A small, light-weight handle attaches to the track chain allowing the track chains to be tested and lubricated immediately after assembly.

The one-button Automated Testing Cycle includes Pressure, Vacuum, and Fill Cycle Tests, with 10 second test vacuum and pressure tests for a thorough test of the track seals, and an easy to read display shows the progress of the testing and the results.

### Specifications:

Compressed Air Requirements -	80 – 120 psi (5,5 – 8,3 Bar) 4.0 scfm (0.06 m3/min)
Electrical Requirements -	115V/60 Hz 1-Phase - 2.2 Amps 220V/50 Hz 1-Phase - 1.1 Amps
Dry Weight:	370 lbs (167,83 kg)



### One (1) A2024 Blunt Needle is included with Auto Luber

#### Additional needles sold separately

A2024	Blunt Needle -normally used for CAT track
A2679	Rounded Tip -small diameter normally used on JD and Komatsu track
A3334	Sharp Tip - normally used on seals that are self-sealing (Sorefa)
A3422	Shaft of needle has two diameters and an open tip



**WTC MACHINERY** Engineered to perform. Built to last.

WTC Machinery is a global leader in designing and building machinery and tooling for heavy equipment repair facilities.

## Pad Lifting Devices

### Overview

WTC's Pad Lifting Devices and Pad Change Stations lift and hold the track shoes. This eliminates handling during pin and bushing turns, and makes pad changeovers faster and easier.

Pad Lifting Devices are available for all of WTC Machinery's Track Press models, while the Pad Change Stations are free-standing machines with dedicated winches and self contained hydraulic power supplies.



### Model/Specifications:

Model	Length	Total Chain Weight	Total Shoe Weight
PLD30	30 Ft (9,1 m)	20,000 lbs (9090 kg)	12,000 lbs (54500 kg)
PLD40	40 Ft (12,2 m)	26,000 lbs (11820 kg)	15,000 lbs (6820 kg)
PLD50	50 Ft (15,2 m)	31,000 lbs (14090 kg)	18,000 lbs (8180 kg)

Pad change lines can be added to most conveyor systems manufactured by WTC Machinery, Trackmaster, Wolf, Centurion or Mattson. Contact us directly to see if your existing conveyor could accomodate adding a pad lifter.



# SECTION 2 - SPECIFICATIONS

## DIMENSIONS

Weight ..... 5160 lbs (2345 kg)  
 Width (Depth)..... 27 inches (0,7 m)  
 Length..... 559 inches (14,0 m)  
 Height ..... 45 inches (1,2 m)

## CAPACITY

Pad Lift Capacity ... 10,000 lbs (4550 kg)      Winch Capacity .....12,000 lbs (5450 kg)  
 Pad Lift Length..... 40 feet (12,2 m)      Winch Speed .....24-36 ft/min (7,3-11,0 m/min)  
 Maximum Chain Weight ..... 15,000 lbs (6820 kg)

## HYDRAULIC PUMP UNIT

### Pump -

Flow @ 60 Hz - 7.6 gpm (28,7 lpm)  
 Flow @ 50 Hz - 6.3 gpm (23,9 lpm)  
 Pressure - 2000 psi (138 bar) max.

### Reservoir -

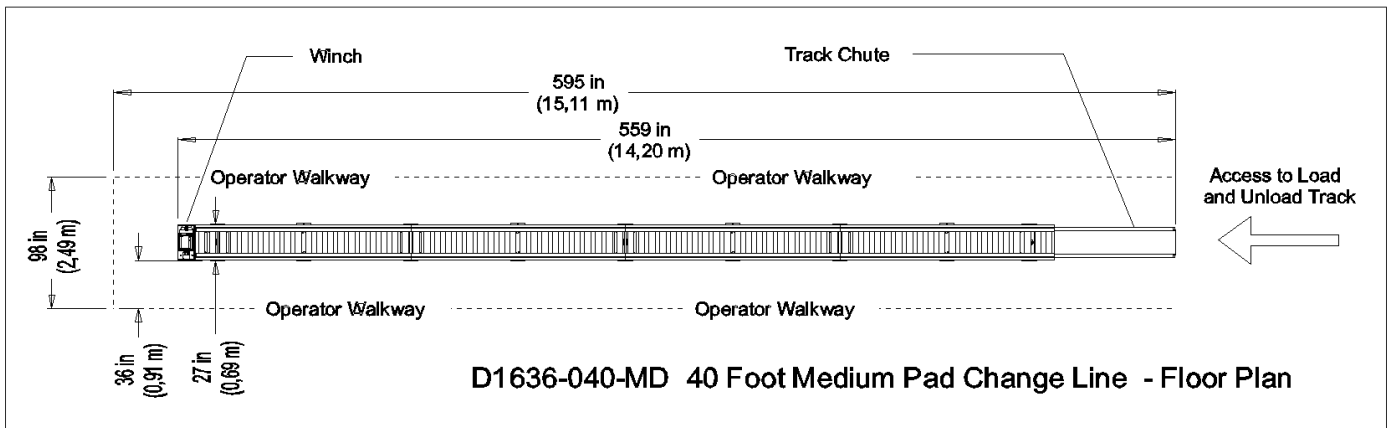
Capacity - 14 US gallons (53 l)

### Electric Motor -

10 Hp (7,5 kW) 3 Phase electric.  
 Standard Voltages:  

<u>50 Hz (1500 rpm)</u>	<u>60 Hz (1800 rpm)</u>
415V / 16A	575V / 13A
380V / 16A	460V / 14A
220V / 30A	230V / 27A
	208V / 29A

Other voltages available



**SPECIFICATIONS SUBJECT TO CHANGE WITHOUT NOTICE**



**WTC MACHINERY** Engineered to perform. Built to last.

WTC Machinery is a global leader in designing and building machinery and tooling for heavy equipment repair facilities.

## WTC HTW Heavy Track Winder

### Overview

A simple, safe, compact means to wind up the track chain. Whether used with a track press conveyor system, or located separately, the HTW is the quick, convenient way to finish up track chain assemblies.



### Specifications:

Maximum Chain Weight:	22,000 lbs (1000 kg)
Maximum Pad Width:	120" (3,1m)
Machine Weight:	5,760 (2620 kg)
Dimensions:	(W x L x H)
Unloaded:	65" x 100" x 99" (1,65m x 2.54m x 2.51m)

**SECTION 2 - B3020 Heavy Track Winder Specifications**

**MACHINE DIMENSIONS**

Weight – 6500 lbs (2950 kg)	Height without track – 100" (2,54 m)
Width – 60" (1,53 m)	Length without track – 110" (2,80 m)
Operating Temperature Range ..... 40° to 110° F (4° to 43° C)	

**MAXIMUM TRACK CHAIN LOAD**

Maximum Weight..... 22,000 lbs (10000 kg)

Maximum Coiled Diameter..... 120 inches (3,1 m)

Maximum Width Including Shoes..... 48 inches (1,22 m)

**WINDING SPEED**

50 Hz Supply ..... 1.9 RPM

60 Hz Supply ..... 2.3 RPM

**ELECTRICAL**

5 Hp (5.42 kW) 3 Phase Electric

**Standard Voltages:**

<u>50 Hz (1500 rpm)</u>	<u>60 Hz (1800 rpm)</u>
440 V / 7.1 A	460 V / 6.8 A
380 V / 8.3 A	230 V / 13.6 A
220 V / 14.2 A	208 V / 15.0 A
Other voltages available	

**SPECIFICATIONS SUBJECT TO CHANGE WITHOUT NOTICE**



**WTC MACHINERY** Engineered to perform. Built to last.

WTC Machinery is a global leader in designing and building machinery and tooling for heavy equipment repair facilities.

## WS5E-3

### Overview

The WS5E-3 Electric Impact Wrench is a fast, cost-effective machine to remove and install track shoe bolts. The balanced frame and roller bearing mounted carriage make for easy one-person operation, while the massive, lubricated impact head, provides the power to loosen and tighten practically all track shoe bolts.

WTC offers a variety of carriages to fit the WS5E-3 to all popular track presses and pad change lines, and a full compliment of impact sockets, extensions, adaptors and track nut wrenches to work with the WS5E-3.



### Model/Specifications

Maximum Torque: 5000 lb-ft (6800 N-m) Intermittent  
High Speed Run-Down / Loosen: 520 rpm

#### Electrical

Electrical Supply: 5 Hp (3.7 kW)  
Standard Voltages: Three Phase  
208V / 60 Hz  
220V / 50 Hz  
230V / 60 Hz  
385V / 50 Hz  
415V / 50 Hz  
460V / 60 Hz





**WTC MACHINERY** Engineered to perform. Built to last.

WTC Machinery is a global leader in designing and building machinery and tooling for heavy equipment repair facilities.

## EL10000

### Fast Torque and accurate torque turns.

The powerful EL10000 All Electric Torque Wrench now takes fast, accurate torquing of track shoe bolts to a whole new level. With advanced remote diagnostics and data logging capabilities downtime and customer warranties are minimized.

A dedicated laptop computer is available with every EL10000, and it's networked so that WTC can perform remote analysis and maintenance on the wrench. This can save the expense and delay of a service visit.

### Advanced Data Storage

In addition, WTC now offers an optional data logging software package for the EL10000 laptop that's sure to boost shop productivity. It records each bolt torque setting, each after-torque turn setting, and the actual measured values obtained from each bolt tightening sequence for each track.

This information is stored in a database, along with the make, model and serial number of the track in question, the service date and time, and any internal job number. Data for a particular machine can then be retrieved whenever the track chain is in need of service, making future repairs and maintenance quicker and easier.

### Quite, Accurate Operation

The EL10000 is well known for its lightweight design and air lift, which reduce operator fatigue while providing plenty of down-force for worn bolts. It's entirely electric, making it quite, less than 80 decibels at full running speed of 420 RMPs. The EL10000 is more reliable and more accurate than a hydraulic wrench.



With this wrench there is no need to touch off worn bolts like this.



### Specifications:

Maximum Torque:	8,000 lb-ft (11000 N-m)
High Speed Run-Down:	422 rpm
Hydraulic Down Force:	1,500 lb/f (6,670N)
After Turn Torque Angles:	60, 90, 120, 150, & 180
Torque Turn Range:	225 lb-ft to 7,000 lb-ft

### Electrical

Electrical Supply:	5 Hp (3.7 kW)
Standard Voltages:	Three Phase
	208V / 55.20A / 60 Hz
	220V / 57.96A / 50 Hz
	230V / 50.00A / 60 Hz
	380V / 52.50A / 50 Hz
	415V / 26.25A / 50 Hz
	460V / 25.00A / 60 Hz
	460V / 25.00A / 60 Hz



**SECTION 3 – EL10000 Electric Torque Wrench Specifications**

**DIMENSIONS**


**Weight** ... 1570 lbs (715 kg)    **Width** ..... 57 inches (1,45 m)  
**Length**... 59 inches (1,50 m)    **Height** ..... 74 inches (1,88 m) above Conveyor centerline  
106 inches (2,69 m) on standard conveyor

**ENVIRONMENTAL**

Operating Temperature Range .... 50°F to 100°F ( 10°C to 38 °C)  
Storage Conditions ..... 0°F to 150 °F (-18 to 65 °C) Non-condensing Moisture  
Altitude ..... < 3,280 feet (< 1000 meters) above Sea Level  
Noise Level ..... 77 dB (A-Weighted)

**MAXIMUM TORQUE**

8,000 lb-ft (11000 N-m)



**WARNING!**  
*Improperly rated tooling (sockets, adapters and extensions) present the risk of flying debris.  
 Always use impact-rated tooling, sized for the maximum bolt torque.  
 Always consider the effects of the after-turn and of rusted or damaged track bolts on the torque rating.  
 Always inspect sockets, adapters and extensions before use, and discard damaged tooling.*

**OUTPUT DRIVE**

1-1/2" (38.1 mm) Square Drive

**SOCKET DOWN-FORCE**

1,500 pounds (680 kg-F)

**MAXIMUM SPEED**

422 RPM

**AFTER-TURN ANGLES**

0°, 60°, 90°, 120°, 150° and 180°

**HYDRAULIC POWER UNIT**

Pressure - 300 psi (21 Bar) Max.  
Flow – 3.5 GPM (13 LPM) Max.

**CARRIAGE WHEELS**

Standard – match 6" A36 "C" Channel  
Other sizes available on request

**ELECTRICAL SUPPLY**

21,5 kW 3-Phase 50 / 60 Hz  
Standard Voltages\*:

<u>50 Hz</u>	<u>60 Hz</u>
415 V / 30.5 A	460 V / 27.5 A
380 V / 33.3 A	230 V / 55.0 A
220 V / 57.9 A	208 V / 60.8 A

**COMPRESSED AIR SUPPLY**

Pressure - 80 to 120 psi (5,5 to 8,3 Bar)  
Flow - 4.0 SCFM (0.06 m<sup>3</sup>/min) min.  
Air line (by customer) – 3/8" (10 mm) min. ID  
Air supply should have a shutoff, filter and dryer

**\*NOTE:** *The EL10000 connects directly to 460 Volt 60 Hz WYE-connected electrical supplies. Customers with 460/60 electrical should confirm it is WYE-connected, with a center-point earth ground. EL10000 models for other voltages are shipped with transformers to convert to a 460 Volt WYE-connected output.*

**FESTOON SYSTEM**

Festoon Systems (or cable carriers) are available from WTC Machinery for the EL10000. These support the EL10000's power cable and compressed air line, and allow them to travel with the EL10000 as it moves along the conveyor system.

**SPECIFICATIONS SUBJECT TO CHANGE WITHOUT NOTICE**





**WTC MACHINERY** Engineered to perform. Built to last.

WTC Machinery is a global leader in designing and building machinery and tooling for heavy equipment repair facilities.

## CG-4 Grouser Welder

### Overview

The CG-4 Grouser Welder features bead oscillation and a high-current 1,000 Amp Submerged-Arc welding torch for maximum weld deposit and penetration without the need for special protective gear. The standard cut-off station works with a variety of fuel gases, and track shoe handling is easy with the included air hoist. The optional Wire Barrel holder increases run time for greater productivity.



### Specifications:

Maximum Pad Width:	40 (1,02 m)
Welding Torch:	1 x 1000 Amps
Standard Wire Spool Size:	Weight - 120 lb (54 kg)
Inside Diameter:	6 in to 28 in (152 mm to 712 mm)
Optional Wire Barrel Size - Weight:	1,200 lb (540 kg)
Outside Diameter:	24 in (628 mm)
Air Hoist Capacity:	500 lb (225 kg)

### Electrical

Electrical Supply:	77 kW
Standard Voltages:	Three Phase 208V / 60 Hz 220V / 50 Hz 230V / 60 Hz 385V / 50 Hz 415V / 50 Hz 460V / 60 Hz

**D1660 CG-4 Grouser Welder Specifications**

**DIMENSIONS**

---

**Main Machine**

Weight ..... 5900 lbs (2680 kg)      Width (Depth) ..... 84 inches (2,1 m)  
 Length ..... 240 inches (6,1 m)      Height ..... 105 inches (2,7 m)

**Welding Power Supply**

Weight ... 820 lbs (373 kg)      Width (Depth) ..... 23 inches (0,6 m)  
 Length ..... 39 inches (1,0 m)      Height ..... 31 inches (0,8 m)

Operating Temperature Range .... 40° to 110° F (4° to 43° C)

**MAXIMUM PAD SIZE**

---

48 inches (1,22 m) long

**MACHINE SUPPLY**

---

**Compressed Air Requirement** - 60 to 80 p.s.i. (4,0 to 5,4 atm) 5.0 ft<sup>3</sup>/min (0,15m<sup>3</sup>/min)

**Cutting Oxygen Requirement** - Regulated between 20 to 30 p.s.i. (1.2 to 1.8 atm)  
 (Regulator not supplied)

**Cutting Acetylene Requirement** - Regulated between 5 to 10 p.s.i. (0,34 to 0,68 atm)  
 (Regulator not supplied - cutting torch suitable with other fuels available upon request)

**WELDING POWER SUPPLY**

---

<b>Output</b>	<b>Power Requirements - (26.0 kVA)</b>	
	<b>Voltage</b>	<b>Current</b>
Maximum Current ..... 1000 Amperes	230 Volts	193 Amperes
Maximum Voltage ..... 50 Volts	380 Volts	112 Amperes
Duty Cycle..... 100%	415 Volts	107 Amperes
	460 Volts	97 Amperes
	Other voltages available	

**WIRE REEL**

---

Capacity sized for all popular welding wire spools

Maximum Wire Spool Diameter ..... 28 in (712 mm)  
 Minimum Wire Spool Diameter ..... 6 in (152 mm)  
 Maximum Wire Spool Weight ..... 120 lb (54,0 kg)

**CRANE**

---

Capacity - 500 lbs (225 kg)



**WTC MACHINERY** Engineered to perform. Built to last.

WTC Machinery is a global leader in designing and building machinery and tooling for heavy equipment repair facilities.

## CR10 Roller & Idler Rebuilder

### Rebuild worn idlers and rollers more efficiently.

WTC Machinery's CR10 Roller Idler Rebuilder is the modern, efficient way to rebuild worn idlers and rollers. Two high amperage weld heads, each with its own power source, assure high deposition rates with both circumferential (stringer) and oscillate (cross) welding methods.

### Easy Flange Welding

The simple, straightforward controls make operation a cinch. The CR10's standard power yoke tilts up to 45 degrees in both directions, to facilitate flange welding. The high capacity wire holders, flux hopper and included flux recovery system provide uninterrupted welding for the biggest orders.

An optional jib crane, "J" hooks and lifting tongs allow the CR10 to work without forklifts or building cranes, and an optional water system eliminates bore shrinkage when welding assembled rollers.



### Specifications:

Maximum Workpiece Weight:	2000 lbs (910 kg)
Maximum Workpiece Diameter:	52 inches (1320 mm)
Maximum Workpiece Width:	26 inches (660 mm)
Welding Torches:	2 x 600 Amps
Wire Barrel Size:	Weight - 2 x 1,200 lb (540 kg)
Outside Diameter:	24 in (628 mm)

Will also work with 120 lb wire spools

### Electrical

Electrical Supply:	77 kW
Standard Voltages:	Three Phase
	208V / 60 Hz
	220V / 50 Hz
	230V / 60 Hz
	380V / 50 Hz
	415V / 50 Hz
	460V / 60 Hz



**CR-10 Idler/Roller Welder Specifications**

**MACHINE DIMENSIONS**

	<b>Weight</b>	<b>Width</b>	<b>Height</b>	<b>Length</b>
<b>Main Welder</b>	5000 lbs (2270 kg)	90 in (2,3 m)	130 in (3,3 m)	80 in (2,0 m)
<b>Power Supplies (X 2)</b>	800 lbs (370 kg) each	24 in (0,7 m)	36 in (0,9 m)	42 in (1,1 m)
<b>Flux Recovery Pump</b>	200 lbs (90 kg)	19 in (0,5 m)	30 in (0,8 m)	37 in (1,0 m)
<b>Water Cooling System (Optional)</b>	150 lbs (70 kg)	15 in (0,4 m)	27 in (0,7 m)	30 in (0,8 m)

Operating Temperature Range ..... 40° to 110° F (4° to 43° C)

**WORKPIECE DIMENSIONS**

Maximum Weight.....2000 lbs (910 kg)  
 Maximum Diameter..... 52 inches (1320 mm)  
 Maximum Width ..... 26 inches (660 mm)

**MACHINE SUPPLY**

**Compressed Air Requirement** - 80 to 120 p.s.i. (5,5 to 8,3 atm) 5.0 ft<sup>3</sup>/min (0,15 m<sup>3</sup>/min)

**WELDING POWER SUPPLIES**

Two Welding power supplies -

<b>Output</b>	<b>Power Requirements - (26.0 kVA each)</b>	
	<b>Voltage</b>	<b>Current</b>
Maximum Current .....600 Amperes	230 Volts	113.0 Amperes each
Maximum Voltage ..... 50 Volts	380 Volts	69.0 Amperes each
Duty Cycle..... 100%	460 Volts	56.5 Amperes each
	Other voltages available	

**FLUX RECOVERY SYSTEM**

	<b>Power Requirements - (1½ Hp 1.1 kW)</b>	
	<b>Voltage</b>	<b>Current</b>
Flux Pump Type..... 2-Lobe "Roots" Type		
Flux Hopper Capacity..... 4900 in <sup>3</sup> (81 liters)	230 Volts	5.4 Amperes
	380 Volts	3.0 Amperes
	460 Volts	2.7 Amperes
	Other voltages Available	

**WIRE PAY-OUT PAK**

Two Pay-out Paks -

Capacity sized for all popular welding wire barrel containers

Maximum Wire Barrel Diameter ..... 24 in (628 mm)  
 Minimum Wire Barrel Diameter ..... 6 in (152 mm)  
 Maximum Wire Barrel Weight ..... 1200 lb (540 kg)

**WATER COOLING SYSTEM (Optional)**

Used in roller service, the Water Cooling System transfers heat from the roller currently being welded to next roller to be welded. This eliminates bore shrinkage, and shortens pre-heat time. The included Adapter Kit allows use with most undercarriage types.

**SPECIFICATIONS SUBJECT TO CHANGE WITHOUT NOTICE**



**WTC MACHINERY** Engineered to perform. Built to last.

WTC Machinery is a global leader in designing and building machinery and tooling for heavy equipment repair facilities.

## SCRS

### Overview

The SCRS Small Cylinder Repair Stand provides a stable platform for servicing hydraulic cylinders. The SCRS is a space-saving option for disassembly and nut-busting on small and medium rod eye style hydraulic cylinders. The unique frame design allows barrel storage on top of the unit, making the maximum use of available shop space.

Using the self-contained hydraulic system, the SCRS loosens and tightens piston nuts up to 20,000 lb-ft (27,100 N-m).



B2888-001 SCRS Small Cylinder Bench and B3572 Square Nut Socket (Optional)

### Specifications:

Maximum Cylinder Weight:	8000 lbs (3650 kg)
Maximum Barrel Diameter:	11 1/2 in (292 mm)
Maximum Cylinder Length:	109 in (2,76m)
Maximum Rod Eye Width:	8.8 in (225 mm)
Maximum Piston Nut (Across Flats):	6.3 in (162 mm)
Maximum Torque:	20,000 lb-ft (27,100 N-m)

### Electrical

Power Requirements:	2 Hp (1.5 kW)
Standard Voltages:	120/60, 220/50, 230/60 Single-Phase





**WTC MACHINERY** Engineered to perform. Built to last.

WTC Machinery is a global leader in designing and building machinery and tooling for heavy equipment repair facilities.

## HCRS-1C



### Overview

The HCRS-1C Hydraulic Cylinder Repair Stand provides a stable platform for disassembling, servicing and reassembling hydraulic cylinders. The HCRS-1C provides hydraulic assist to remove and reinstall the piston assembly, and a full set of clamps and supports to safely service only rod eye hydraulic cylinders.

Using the self-contained hydraulic system, the HCRS-1C removes and re-installs piston keeper nuts with torque up to 20,000 ft-lbs (27,100 N-m), and removes and installs piston rods with a force up to 28,860 lbs.

### Specifications:

Maximum Cylinder Weight:	8000 lbs (3650 kg)
Maximum Barrel Diameter:	20 in (0.76 m)
Maximum Cylinder Length:	120 in (3.04 m) ***Unlimited with extensions***
Maximum Rod Eye Width:	8.8 in (225 mm)
Maximum Piston Nut (Across Flats):	6.3 in (162 mm)
Piston Extraction / Insertion Force:	14,000 lbs (6560 kg-f)
Maximum Torque:	20,000 lb-ft (27,100 N-m)

### Electrical

Power Requirements:	2 Hp (1.5 kW)
Standard Voltages:	120/60, 220/50, 230/60 Single-Phase

# HCRS-1C Specifications

**DIMENSIONS**

**Weight** .....3500 lbs (1600 kg)      **Length**..... 235 inches (6,00 m)  
**Width** ..... 39 inches (1,00 m)      **Height** ..... 55 inches (1,40 m)

**HYDRAULIC**

**Maximum Pressure** ..... 3000 p.s.i. (206 bar)  
**Maximum Flow** ..... 1.0 gpm (3.8 lpm)

**ELECTRICAL** ..... 2 Hp (1.5 kW) 1 Phase Electric

**Standard Voltages:**

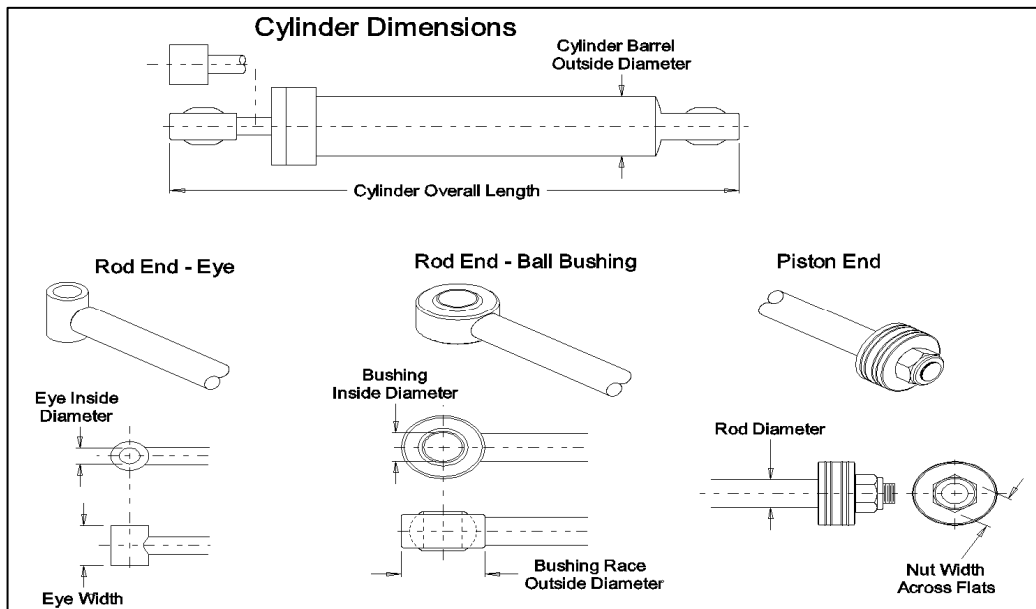
<u>50 Hz</u>	<u>60 Hz</u>
220 V / 11.5 A	230 V / 9.5 A
110 V / 22.5 A	120 V / 19.0 A

**TORQUING CAPACITY** ..... **20,000 Foot-Pounds (27100 N-m)**

**EXTRACT / INSERT FORCE** ..... **20,400 Pounds (9270 kg-F) Extract / 24,900 Pounds (11320 kg-F) Insert**

**CAPACITY - MAXIMUM / MINIMUM CYLINDER SPECIFICATIONS**

**Weight** .....< 8000 lbs (3650 kg)      **Cylinder Barrel Diameter** 20 inches (,76 m)  
**Overall Length**...<120 inches (3,04 m) unlimited with extensions  
**Bushing Inside Dia**.....> 1-1/2 inches (38 mm)  
**Rod Eye Width**...< 8-7/8 inches (225 mm)      **Rod Eye Inside Dia**.....> 1-1/2 inches (38 mm)  
**Piston Nut Width (Across Flats)** ... < 6-3/8" (162 mm)





## HCRS-4P

### Disassemble, service and reassemble any cylinder in one stop.

The HCRS-4P Hydraulic Cylinder Repair Stand is the complete, all-in-one solution for servicing standard and multi-stage hydraulic cylinders, large and small. It includes the mighty new NTS-50 Torquing Device as a standard feature, making it easy to remove and reinstall the toughest piston assembly. The NTS-50 turns nuts with up to 50,000 lb-ft (67800 N-m) of high-torque power, and up to 3,000 lb-ft (4070 N-m) of high-speed (30 RPM) force.



### Numerous Options

The HCRS-4P can accommodate practically any cylinder design and size, thanks to the NTS-50's universal tool mount and wide range of optional equipment.

The hex plates will accept most piston nuts. They're available as a complete set, or individually in sizes ranging from 3 inches (76 mm) to 6 1/8 inches (155 mm). An optional adjustable hex tool accommodates a range of piston nuts from 3 inches (76 mm) to 9 inches (228 mm). Optional square drive adapters are available in 3/4 inch, 1 inch, 1 1/2 inch, and 2 1/2 inch sizes.

### Mobile Hydraulic Cart

The HCRS-4P includes a mobile hydraulic cart that allows the operator to control the system while moving along the cylinder, protected behind a Plexiglas shield. It can be used to operate an assortment of hydraulic components, including additional hydraulic cylinder repair stands.

The HCRS-4P also offers the ability to fully test the cylinder after rebuilding, making this an efficient, profitable and complete cylinder service system. An optional stand-alone cylinder hone bench is available, to extend your shop's rebuilding capability.



WTC Machinery is a global leader in designing and building machinery and tooling for heavy equipment repair facilities.



**WTC MACHINERY**  
Engineered to perform. Built to last.

## HCRS-4P

### Specifications:

Max. Torque (Stroking):	50,000 lb-ft (67790 N-m)	<b>Electrical</b>	
Max. Torque (Nut-Runner):	3,000 lb-ft (4060 N-m)	Power Requirements:	5 Hp (3.8 kW)
Piston Extraction / Insertion Force:	37,700 lbs (17140 kg-f)	Standard Voltages:	Three Phase
Max. Cylinder Weight:	12,000 lbs (5450 kg)		208V / 60 Hz
Max. Cylinder Diameter:	26 in (0.66 m)		220V / 50 Hz
Max. Cylinder Length (extended):	120 in (3.04 m)		230V / 60 Hz
Max. Rod Eye Width:	15 in (0.34 m)		380V / 50 Hz
Max. Piston Nut Width (Across Flats):	9 in (0.23 m)		415V / 50 Hz
			460V / 60 H

**SECTION 2 - HCRS-4P Hydraulic Cylinder Repair Stand Specifications**

**DIMENSIONS**

**Weight** .....8000 lbs (3640 kg)      **Length**..... 314 inches (7,98 m)  
**Width** ..... 40 inches (1,02 m)      **Height** ..... 64 inches (1,63 m)

**HYDRAULIC**

**Maximum Pressure** ..... 3,100 PSI (214 bar)  
**Maximum Flow (60 Hz)**.... 14.0 gpm (52,9 lpm)  
**(50 Hz)**.... 11.7 gpm (44,1 lpm)  
**Reservoir Capacity** ..... 100 gallons (380 liters)

**ELECTRICAL**

5 Hp (3,7 kW) 3 Phase Electric

**Standard Voltages:**

<u>50 Hz (1500 rpm)</u>	<u>60 Hz (1800 rpm)</u>
220 V / 18.6 A	208 V / 16.8 A
380 V / 9.6 A	230 V / 16.4 A
415 V / 9.8 A	460 V / 8.3 A
	575 V / 5.8 A

Other voltages available upon request

**TORQUING CAPACITIES**

**HSCR-4P Components**

**NTS-50 Torquing Device** ..... 50,000 lb-ft (69,250 N-m)  
**NTS-70 Torquing Device** ..... 70,000 lb-ft (96,950 N-m)  
**High-Speed Nut Runner** ..... 3,000 lb-ft ( 4,150 N-m)  
**Spanner Assembly** ..... 10,000 lb-ft (13,850 N-m)  
**Adjustable Wrench Assembly** 50,000 lb-ft (69,250 N-m)  
**Hex Plate Assembly** .....70,000 lb-ft (96,950 N-m)

**Sockets, Extensions and Adapters**

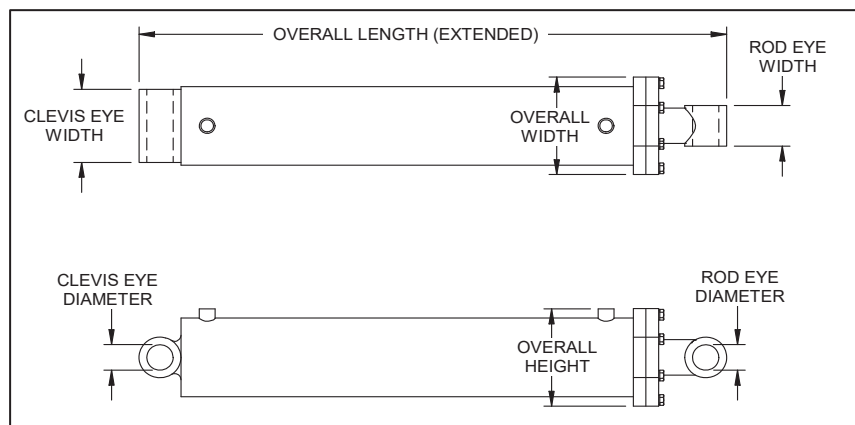
(Follow manufacturer's specifications)

General Specifications -

$\frac{3}{4}$ " Drive ... 300 lb-ft ( 415 N-m)  
1" Drive ... 750 lb-ft ( 1,040 N-m)  
1½" Drive... 2,000 lb-ft ( 2,770 N-m)  
2½" Drive..10,000 lb-ft (13,850 N-m)

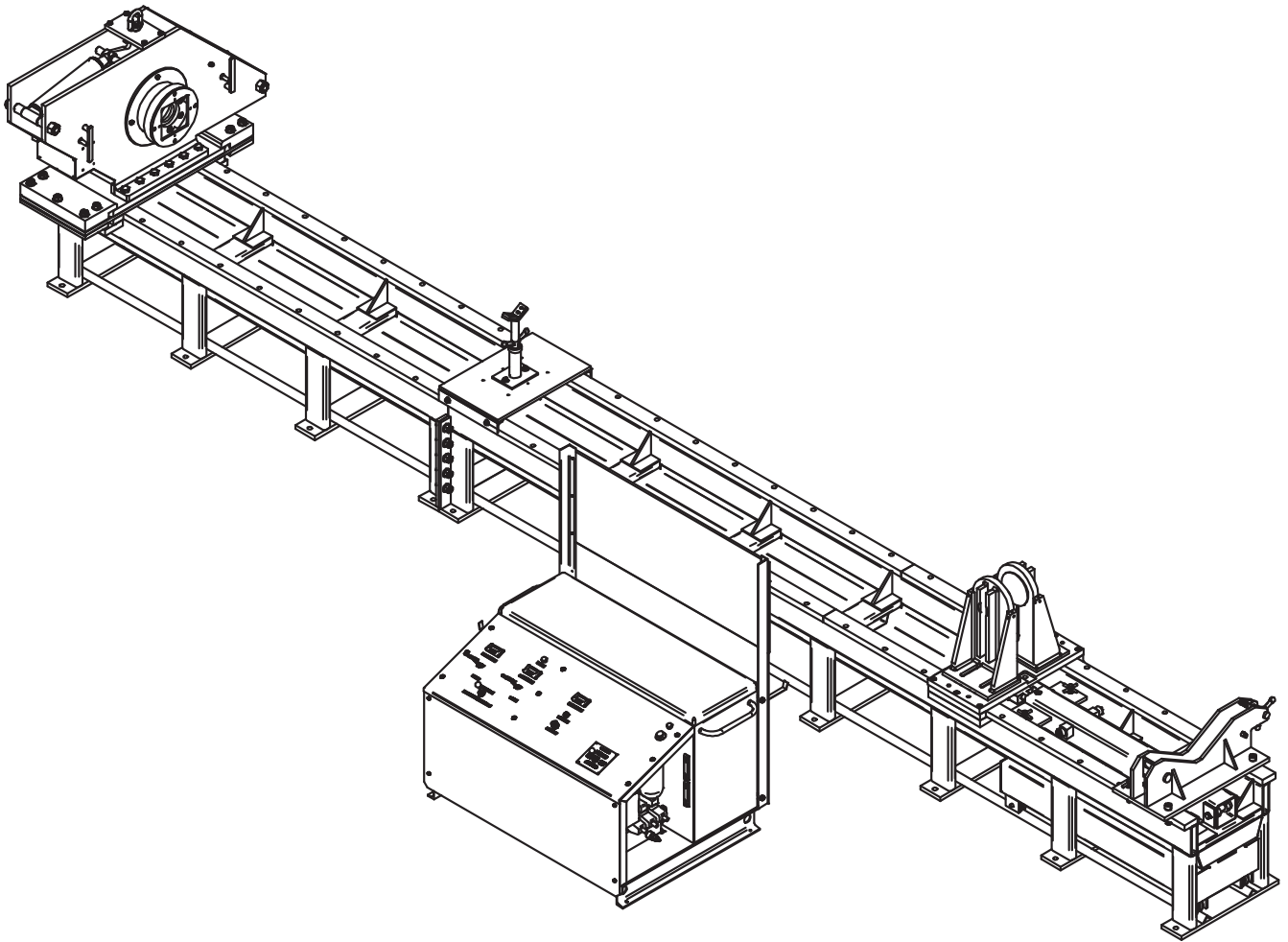
**CAPACITY - MAXIMUM / MINIMUM CYLINDER SPECIFICATIONS**

<b>Weight</b> .....< 12,000 lbs (5450 kg)	<b>Overall Length</b> ..... < 312 inches (7,92 m)
<b>Overall Width</b> ..... < 26 inches (0,66 m)	<b>Overall Height</b> ..... < 26 inches (0,66 m)
<b>Clevis Width</b> ..... < 15 inches (0.38 m)	<b>Clevis Inside Dia</b> ..... > 1 inch (25 mm)
<b>Rod Eye Width</b> .....< 15 inches (0.38 m)	<b>Rod Eye Inside Dia</b> .....> 1 inch (25 mm)



# HCRS-4P-70

## HYDRAULIC CYLINDER REPAIR STAND



Machinery LLC

W1222 Linden Road

Ixonia, Wisconsin 53036 USA

Phone: 800.248.8405 or 262.567.3993

Fax: 262.567.4307

[www.wtcmachinery.com](http://www.wtcmachinery.com)

**HCRS-4P-70 Hydraulic Cylinder Repair Stand Specifications**

**DIMENSIONS**

**Weight** ..... 10,500 lbs (4780 kg)      **Length**..... 350 inches (9,10 m)  
**Width** ..... 68 inches (1,73 m)      **Height** ..... 72 inches (1,83 m)

**HYDRAULIC**

**Maximum Pressure (Tooling)** ..... 2900 p.s.i. (200 bar)  
**Maximum Pressure (Testing)** ..... 5000 p.s.i. (345 bar)  
**Maximum Flow** ..... 21.0 gpm (79,5 lpm)  
**Reservoir Capacity** ..... 100 gallons (380 liters)

**ELECTRICAL**

**10 Hp (7.6 kW) 3 Phase Electric**

**Standard Voltages:**

<u>50 Hz (1500 rpm)</u>	<u>60 Hz (1800 rpm)</u>
440 V / 14.2 A	460 V / 14.6 A
380 V / 17.6 A	230 V / 28.2 A
220 V / 29.4 A	208 V / 31.0 A
Other voltages available upon request	

**TORQUING CAPACITIES**

**HSCR-4P Components**

**Main Torqueing Device** ..... 70,000 lb-ft (69,250 N-m)  
**High-Speed Nut Runner** ..... 3,000 lb-ft ( 4,150 N-m)  
**Spanner Assembly** ..... 10,000 lb-ft (13,850 N-m)  
**Adjustable Wrench Assembly** 70,000 lb-ft (69,250 N-m)  
**Hex Plate Assembly** ..... 70,000 lb-ft (69,250 N-m)

**Sockets, Extensions and Adapters**

(Follow manufacturer's specifications)  
General Specifications -  
 ¾" Drive ... 300 lb-ft (415 N-m)  
 1" Drive ... 750 lb-ft (1,040 N-m)  
 1½" Drive... 2,000 lb-ft (2,770 N-m)  
 2½" Drive..10,000 lb-ft (13,850 N-m)

**CAPACITY - MAXIMUM / MINIMUM CYLINDER SPECIFICATIONS**

**Weight** ..... < 12,000 lbs (5450 kg)      **Overall Length** ..... < 312 inches (7,92 m)  
**Overall Width** ..... < 26 inches (0,66 m)      **Overall Height** ..... < 26 inches (0,66 m)  
**Clevis Width**..... < 15 inches (0.38 m)      **Clevis Inside Dia**..... > 1.5 inch (39 mm)  
**Rod Eye Width**..... < 15 inches (0.38 m)      **Rod Eye Inside Dia**..... > 1.5 inch (39 mm)

